






SOLIDWORKS Installation Repair







Why Repair?

As with any Windows based program, sometimes database files, registry keys, dlls, or many other files can get lost, deleted, or corrupted; SOLIDWORKS is not immune to these problems. Fortunately, when these problems arise, SOLIDWORKS has a built-in repair mechanism that can rewrite the program files and registry keys back to the original install state to help get you back up and running in a short amount of time. If you experience some of these problems, a quick repair may fix them:

-  Toolbox is malfunctioning
-  Abnormal visual defects
-  Missing Add-ins
-  Machine specific 'Bugs'
-  SOLIDWORKS not opening past the Splash Screen

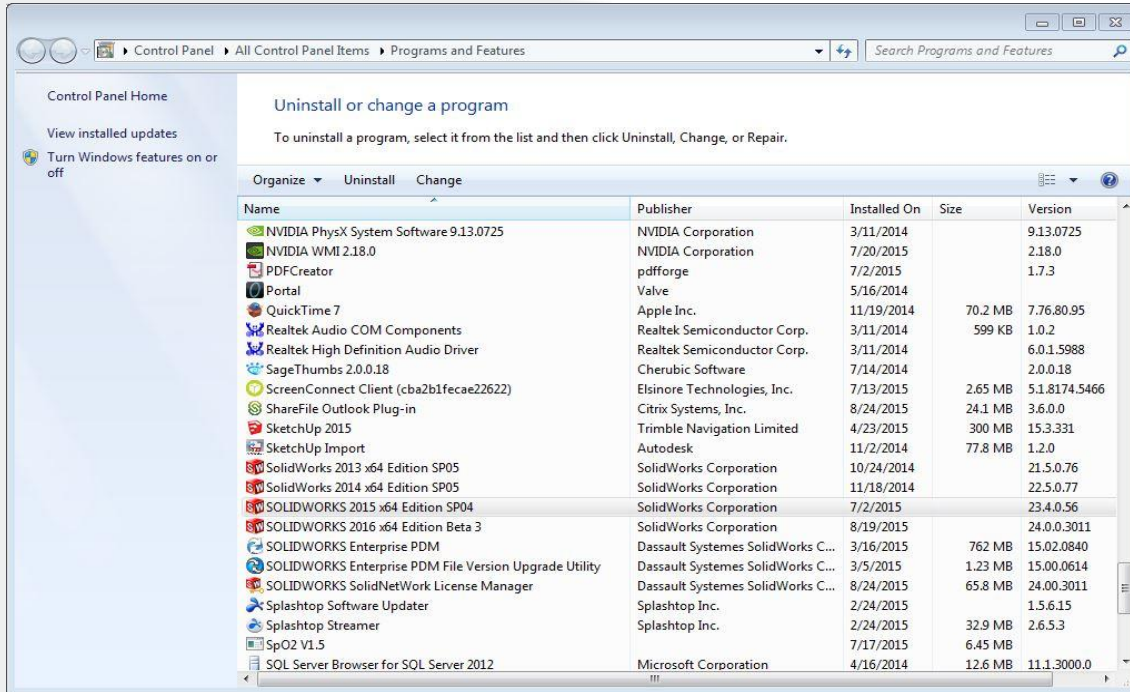
What's Needed for the Repair?

In order for SOLIDWORKS to do a repair, it will need access to the original install files, which vary depending on the initial install method:

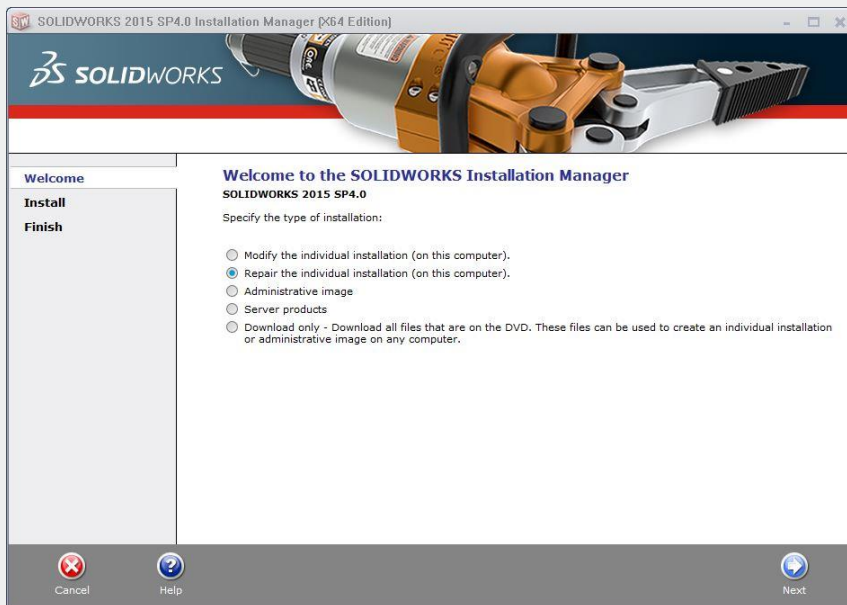
-  From a DVD Media Disk
 -  The original install files are located on the disk. You must have this to do a repair.
-  Downloaded from the Internet
 -  If the original install was from a download, SOLIDWORKS would have stored the install media on the local hard disk, usually located in the user's documents folder. By default, the media is located in a folder call SOLIDWORKS Downloads.
-  Admin Image
 -  If you completed the original installation from an admin image, you cannot do a repair of the installation. If you run into any problems with an admin image, you must reinstall the admin image as the repair.

Process

First, navigate to the Windows Add/Remove Program Dialouge Box (Start->Control Panel->Programs and Features)

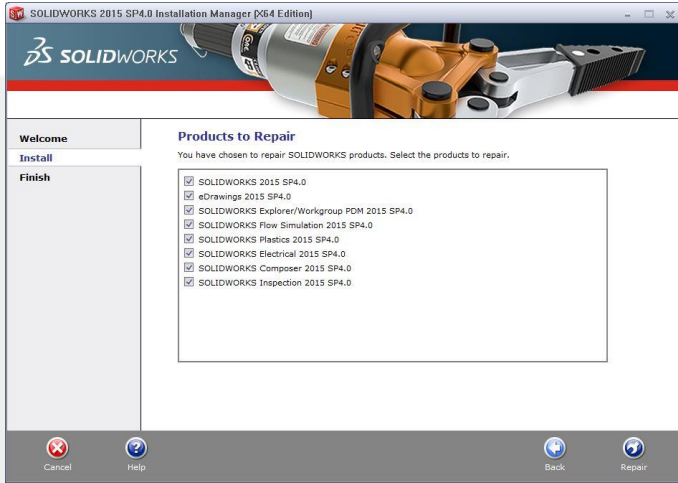


Right-click the SOLIDWORKS product and select change.
On the SOLIDWORKS Installation Manager, select 'Repair the Individual Installation.'

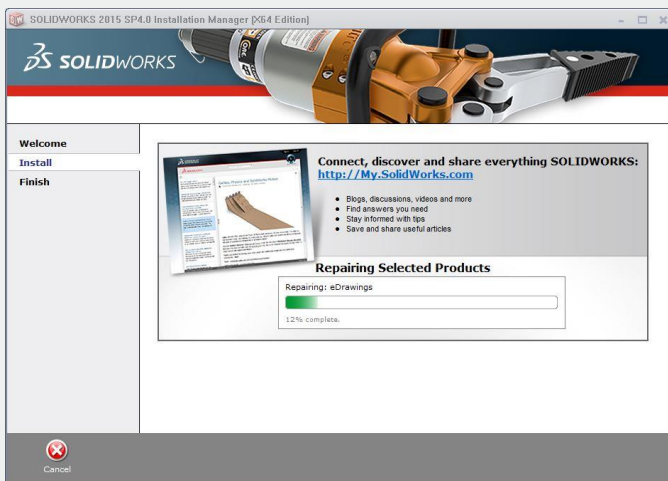


Select Next.

You will be asked to select the products that you want to repair.



Select Repair.



SOLIDWORKS will notify you once the repair is complete.

