



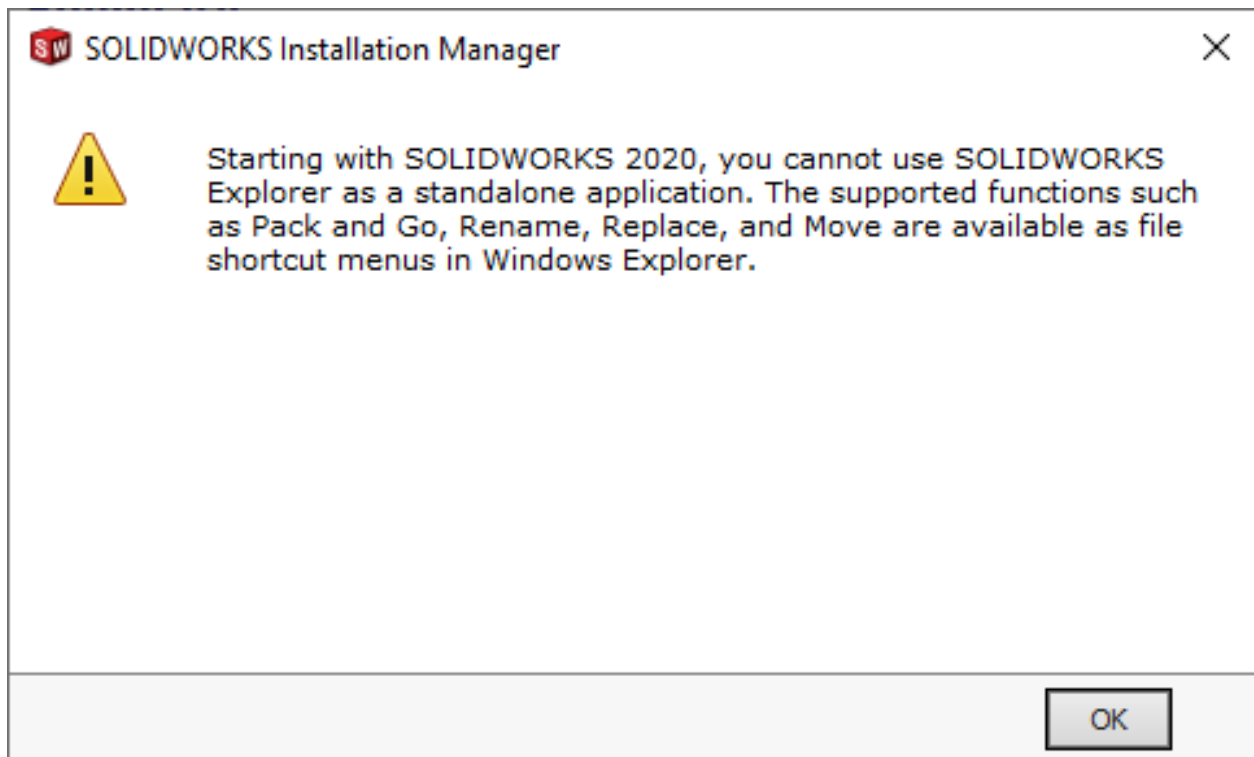
SOLIDWORKS 2020 – Where Did [blank] Go?!

The One Constant is Change

Some of the most frustrating hinderances to productivity are disruptions to the status quo. So much of what we do as SOLIDWORKS users has been committed to muscle memory that any changes to how tools work or where they are can really throw us off our game. This is why SOLIDWORKS very carefully considers the changes that are made and it's not often that the user interfaces changes in drastic ways. Still, even the smallest changes can catch us off guard. Here we talk about a few of the recent changes with SOLIDWORKS 2020 and help to re-train our brains.

SOLIDWORKS Explorer

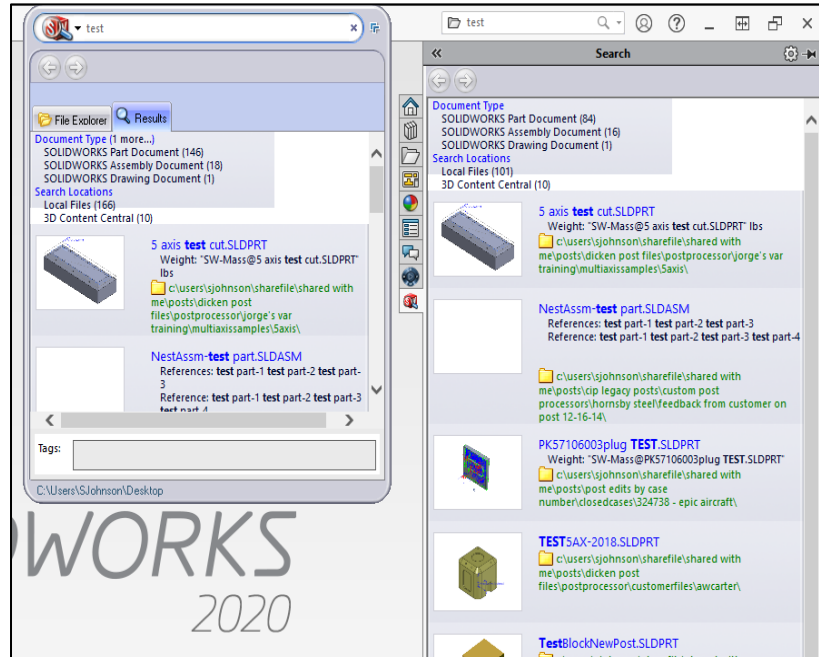
This one should not be a surprise to anyone that has been updating SOLIDWORKS each year. For installations of 2019, the installation manager has warned that SOLIDWORKS Explorer would no longer be available as a standalone product. Don't worry though, all of the functionality has been rolled into SOLIDWORKS 2020.





Search

The search function from SOLIDWORKS Explorer has been integrated into the Search Bar in the upper right corner of SOLIDWORKS. As you can see on the right, the results of your search show up in the Task Pane and are identical to what you are used to seeing from SOLIDWORKS Explorer.

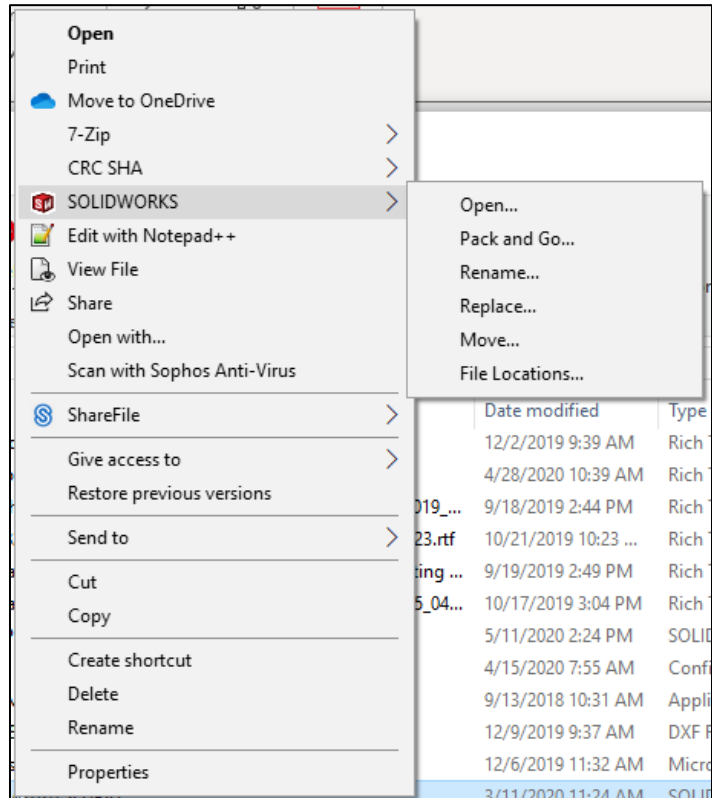


In addition to the standard 'Recent Documents' and 'Local Files' search locations, SOLIDWORKS 2020 adds a host of other search result sources like the Knowledge Base and Social Media platforms like Twitter, as well as Training Materials and the Community Forum through the MySOLIDWORKS search.

Open / Rename / Replace / Move

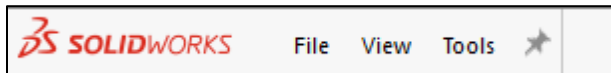


These items have been a part of the right-click context menu within Windows Explorer for years, but as alluded to earlier, muscle memory is potent. So, in case you've been struggling to track down these commands, simply right-click on the target file in Windows Explorer and access the commands in the 'SOLIDWORKS' flyout menu. The dialogs for each of these commands are the same as they've always been and function exactly the same.



Menus and Quick Access tools

SOLIDWORKS 2020 Toolbar



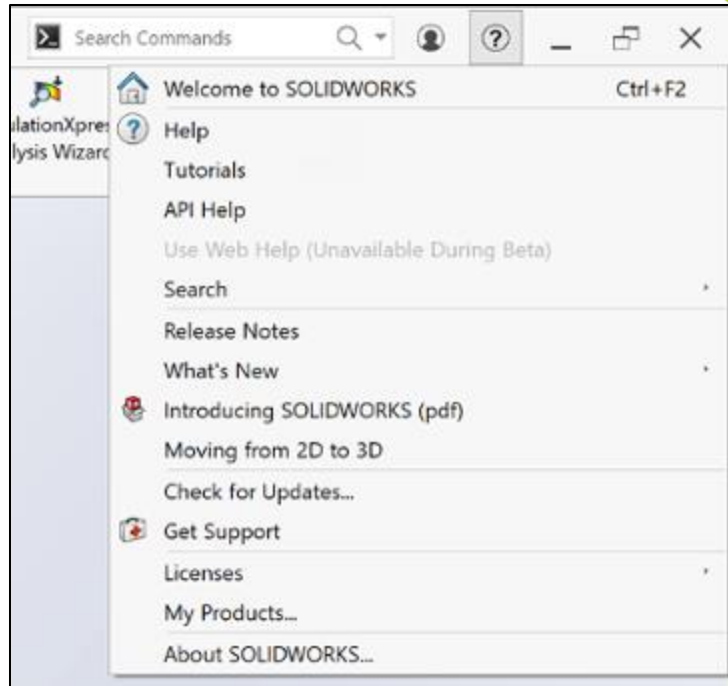
You may be wondering, after launching SOLIDWORKS 2020, "Where's the 'Help' menu?" Or, maybe more emphatically, "Where are the 'New document', 'Open', and 'Options' buttons?!"

SOLIDWORKS 2019 Toolbar

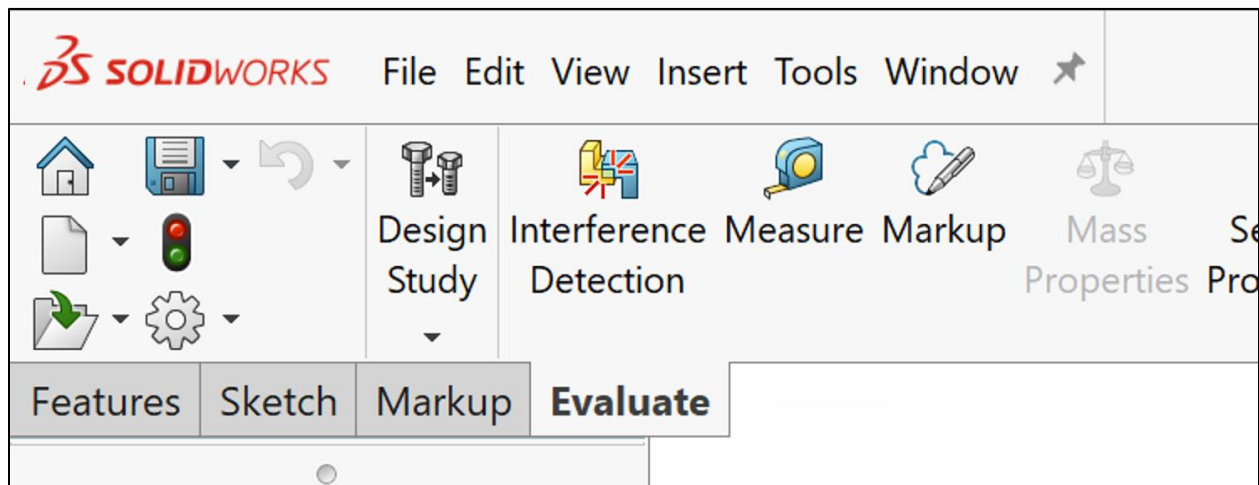




As you might expect, the 'Help' menu items have been consolidated under the '?' icon to the right of the SOLIDWORKS Search bar. This provides a simplified user interface, eliminates some duplication of commands, and establishes consistency between the SOLIDWORKS desktop application and 3dExperience Platform applications. This change is how the interface will look going forward and cannot be undone.



As for the row of buttons that you've become accustomed to seeing on the 'Menu Bar', these have been moved to the Command Manager and will appear to the left of all active tabs.





If you'd prefer to have these commands back where they were, simply open the 'Customize' dialog and toggle the 'Quick Access Tools' setting desired.

